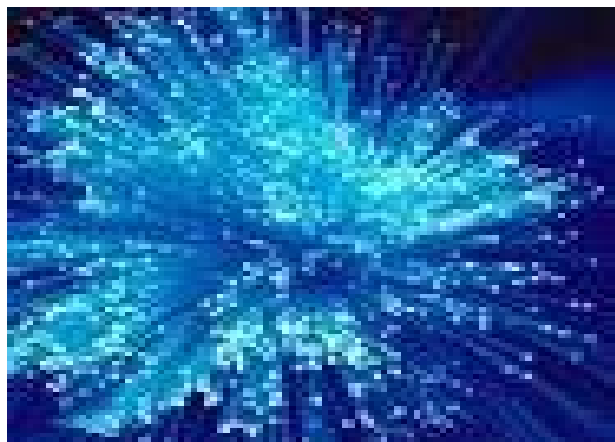


## Newsletter Publication

August 2011

*Welcome to the WIE!*



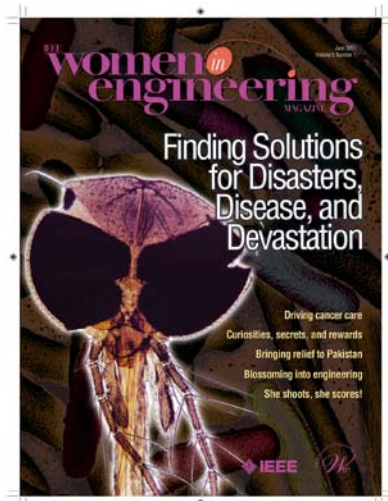
### IEEE Women in Engineering

**WIE MISSION.** Inspire, engage, encourage, and empower IEEE women worldwide.

**WIE VISION.** A vibrant community of IEEE women and men innovating the world of tomorrow.

## WiE Got News....

Excerpts from various IEEE Sources for news, information, and current events.



The June 2011 Issue of IEEE WIE Magazine has been released.

Look for it in the mail with IEEE Spectrum Magazine.

Congratulations to Bozenna Pasik-Duncan on being honored with the Steeples Service to Kansas Award



Bozena Pasik-Duncan, IEEE Control Systems Society coordinator and a University of Kansas mathematics professor whose outreach efforts have affected thousands of students in Kansas is the 2011 recipient of the Steeples Service to Kansas Award. Bozena was honored for her accomplishments at the College of Liberal Arts and Sciences graduate recognition ceremony May 22, 2011.

Thousands of students in grades K-12 have benefited from mathematics classes, workshops and competitions

established by Bozena. In 1994, she started teaching mathematics classes four times a week in a Lawrence elementary school on top of her regular teaching load at KU. In just two years, the students won 17 awards at Kansas Regional Math Contests.

She has since expanded her contributions. She has organized and implemented Mathematics Awareness Month at KU for 17 years, which has received accolades from the governor and the Lawrence City Council. The mathematics competitions that are part of this program have attracted more than 1,000 students from about 90 Kansas schools in kindergarten through 12th grade in the past five years alone. Bozena has also established a partnership in mathematics education between local elementary schools and KU, as well as an annual mathematics workshop for 5th and 6th graders in her area. She participates in about three workshops a year for high school teachers of mathematics and science in the United States and abroad.

Bozena has been a faculty member in the Department of Mathematics since 1984. She has been honored with several of KU's most prestigious accolades, including the W.T. Kemper Fellowship for Teaching Excellence; the Frank B. Morrison Award for distinguished teaching; induction into the KU Women's Hall of Fame; and the distinction of being the first mathematics professor to receive the HOPE teaching award since it was established in 1959.

Funds for the Steeples award are managed by KU Endowment, an independent, nonprofit organization serving as the official fundraising and fund-management for KU. Founded in 1891, KU Endowment was the first foundation of its kind at a U.S. public university. Don Steeples, the Dean A. McGee Distinguished Professor of Applied Geophysics, and his wife, Tammy, established the award in 1997 to honor Don Steeples' parents, Wally and Marie Steeples, and to recognize outstanding service by KU faculty to other Kansans. The award provides recipients with \$1,000 and an additional \$1,000 base adjustment to their salaries. For more information, please visit:  
<http://www.news.ku.edu/2011/june/2/steepleaward.shtm>.



## The IEEE GirlsGoEngineering.org Project

IEEE GirlsGoEngineering.org Project, a pre-university science, technology, and engineering education and career preparation program of the [IEEE](#), was founded in 2008 by [IEEE Region 3](#) and the [IEEE Richmond Section](#).

IEEE GirlsGoEngineering.org will provide girls, teens, educators, and adult leaders with programs, activities, material, and web resources to:

- Develop in girls an appreciation for engineering principles.
- Enable girls to learn to enjoy engineering practices.
- Energize girls toward careers in engineering, mathematics, and the physical sciences.

### Find out more at:

<http://girlsgoengineering.org/about/index.html>.

**Looking for GRPW Alumnae!** Have you been a GRPW student or mentor at Bell Laboratories, or do you know someone who was? Please read on, and please pass this note on to other potential alumnae! Prof. Jim West, one of the founders of Bell Labs' CRFP and GRPW programs is celebrating his 80's birthday with a symposium and CRFP & GRPW reunion in the Fall of 2011 at Johns Hopkins University. If you are interested in learning more about the event and to be put on the mailing list, please email Prof. William Wilson ([wwilso20@jhu.edu](mailto:wwilso20@jhu.edu)) or Claire Gmachl ([cgmachl@princeton.edu](mailto:cgmachl@princeton.edu)). We are looking forward to hearing from you!

**Share your history first-hand at IEEE Global History Network (GHN).** One of the main features of the GHN is "First-hand Histories", an opportunity for IEEE members to tell in their own words their stories of their involvement with technology. We would love for more women to participate and invite WIE members to tell share their experiences first-hand at GHN. For more information and to submit your story please visit:  
<http://www.ieeeeghn.org/wiki/index.php/Special:FirstHandHistories>.

### Keystone Symposia Fellows Program.

Now in its fourth year, the purpose of this Program is to provide a “behind the scenes” understanding and experience of the life science research community and how it works. Further, it is focused on enhancing participation in the life sciences by URM scientists.

The Keystone Symposia Fellows Program is now accepting applications for the 2011-2012 year. The application and eligibility requirements may be found at [http://www.kestonesymposia.org/AboutUs/Diversity\\_Fello\\_ws.cfm](http://www.kestonesymposia.org/AboutUs/Diversity_Fello_ws.cfm), as well as photos and bios of the most recent class of Fellows. The application to the Fellows Program must be returned via U.S. postal mail and postmarked no later than 12PM (MST) on September 1, 2011.

Applicants must be actively engaged in laboratory research, must have completed at least 2 years of a Postdoctoral Fellowship or be in an academic or industry appointment (no greater than 4 years).

This Program is a research anchored, diversity focused program. Applicants must be U.S. Citizens or permanent residents. They do not necessarily have to be members of designated visible ethnic minority populations, but they do have to document that they have had substantial in-depth experiences in face to face interaction with persons from minority populations in the U.S. (Native American/Alaska Native, Hispanic/Latino, African American/Black, and Native Hawaiians/Pacific Islanders).

Further, the applicants are required to document an understanding of the specific and sometimes nuanced issues and challenges often faced by URM scientists.

#### Quote for the Month:

*“If your ship does n’t come in, swim out to it.”*

— Jonathan Winters



## The First Conference of the United Arab Emirates Gender and Women’s Studies Consortium

### Gender and Women’s Studies in the Arab Region

Sponsored by The American University of  
Sharjah, Sharjah, UAE  
and  
the University of Southern Maine, Portland, USA

Wednesday, March 7- Friday, March 9, 2012

**Call for Papers: ANNOUNCING THE  
INAUGURAL CONFERENCE of the United Arab  
Emirates Gender and Women’s Studies  
Consortium (The Consortium).** Scholars,  
practitioners and students interested in gender and  
women’s studies in the UAE and the Arab region are  
encouraged to submit proposals/abstracts for  
individual papers, workshops, panels or seminar-style  
discussion addressing the following conference  
themes.

**Track I. Curriculum Matters: Gender and  
Women’s Studies in/and the Arab Region  
Classrooms**

**Track II. Research Matters: Gender and  
Women’s Studies Perspectives in/on the Arab  
Region**

**Track III. Focus on Arab Feminisms**

Please consider proposing a paper, workshop, panel  
or seminar focused on one or these topics identified  
by the Track on the website. Graduate and  
undergraduate students interested in gender and  
women’s studies are especially welcome to submit  
proposals. The UAE Gender and Women’s Studies  
Consortium is committed to supporting UAE and Arab  
Region faculty interested in developing Gender and  
Women’s Studies courses.

For more information, please visit:  
<http://www.aus.edu/conferences/cfp/papers.php>.

## WEPAN LSU Engineering PhD Fellowships for Fall 2011/Spring 2012. Fellowship

Application to your students who are interested in pursuing a PhD in engineering beginning Fall 2011/Spring 2012. Preference, all else equal, will be given to external and underrepresented and underserved students. Additional details are attached. If you have any questions, don't hesitate to contact Dr. Rusch at 225.578.8528 or [krusch@lsu.edu](mailto:krusch@lsu.edu).

The minimum criteria for eligibility includes: 1) GPA of 3.5 (for both the undergraduate and M.S. degrees) on a 4.0 scale, 2) Acceptable verbal and quantitative scores on the GRE – use of a cutoff number for GRE is not recommended and not applied. 3) The applicant must have completed a M.S. degree program at the time of receiving a Ph.D. Fellowship.

The Ph.D. Fellowship is \$30,000 from the Board of Regents and a \$5,000 supplement from the student's home department for a total award of \$35,000 per year for four years. The departmental supplement will not add additional duties/obligations beyond those of the Fellowship. The award comes with a tuition waiver. In addition, the student will be eligible for the Graduate Assistant Insurance Benefit if they enroll on one of LSU's two student health plans.

The insurance exemption is worth \$350 per semester (fall and spring). Fellows will devote full-time effort to their graduate work for all three semesters of the year (fall, spring, summer). Attendance at national meetings is very important to the scholarly development of the Ph.D. student. The home department of each Fellow will provide, if available, up to \$500 annually for the cost of travel to appropriate technical meetings.

The applicant must be a U.S. Citizen or permanent resident planning to enroll in one of the College's engineering programs. The requested Fellowships are focused in four overlapping areas that all relate to economic development: 1) energy (broad energy platform and environment, 2) coastal and ecological engineering, 3) materials science and engineering and 4) infrastructure (natural and built). These awards are for entering graduate students only – not those currently enrolled. Those applying for the Ph.D. Fellowship must already hold a M.S. degree or will have received a M.S. degree before the start of the Fellowship.

## WIE "Love" Engineering! Do "You" Love Engineering, Too? Do Tell....

Do you go to work every day and do what you love? Do you love what you do? Do tell. WIE want to hear about it! WIE are excited about Engineering and the many women that are a part of WIE! Women, who go to work every day and do what they love, and love what they do.

You are the essence of the WIE, the heart and soul of what makes the purpose and mission of the WIE a reality. WIE delight in your success and your zest and passion for Engineering. And, we want to hear your personal stories so that they might be a means to guide, mentor, and encourage other women in engineering. In today's world, communication is at its peak, and so are technological advancements. But, behind all of this and the key to making this a reality are "people", and they have a story to tell.... WIE want to hear about it.

WIE would like to profile your accomplishments in the monthly publication of the WIE Newsletter. WIE know that we have members out there who are doing a great job in the many fields and faceted disciplines of Engineering, and we want to recognize you within the WIE Community. If you or someone you know would like to share their story, WIE would be delighted to hear from you.

Please provide the person's name, job title, employment information, a picture, a summary of what the person does, and what the person likes about Engineering to be included in the monthly newsletter. WIE would like to profile members working in all facets of engineering, ranging from doctors, scientists, educators, engineers, analysts, technicians, support functions, etc. WIE will profile one to two individuals monthly. Send all correspondences to Keyana Tennant at [keyana.tennant@ieee.org](mailto:keyana.tennant@ieee.org) or Paulette January at [paulette.january@drs-c3.com](mailto:paulette.january@drs-c3.com).





## *WIE Around The World*

- News from IEEE WIE Section Affinity Groups

Tune in next month for IEEE WIE Section Affinity Group News.

- News from IEEE WIE Student Branch Affinity Groups

"Progressive Drive" Orientation Program held at Dr. N.G.P. IT in Coimbatore, India.



The IEEE and WIE student branch chapters of Dr. N.G.P. Institute of Technology (Dr. NGPIT) held a gathering on July 13, 2011 in the form of a project and submission of proposals entitled "Progressive Drive". The welcome address was given by the branch counselor and vice principal, Dr. K. Porkumaran. He also summarized the

forthcoming events that are to be conducted and gave a motivational talk to gear up the spin of a new beginning. Dr. Porkumaran insisted on discussing funding for student projects and research activities. He discussed the different events planned for this academic year such as the National Level Technical Symposium, guest lecturers on new different topics, outdoor activities such as trekking and camping. Following his talk Mr. Prabakar, staff coordinator, IEEE, gave an in depth briefing on the progress of work given to different IEEE committees.



The student members took initiative regarding the newsletter committee and presented various layouts of the newsletter. Ms. V. Priyadarshini, WIE coordinator, pointed out WIE initiatives for special lectures and camps. The student members were asked to contribute their input for not only in technical but also for creative and visually appealing areas. IEEE coordinator S. Krishnaprabu, WIE coordinator Ms. P. Pradeepa, student chairman Mr. Jijendiranath, vice chairman Ms. Hebziba Beula, and other IEEE student branch members participated. Based on the outcome of this Orientation Program, seven student project proposals were submitted to the IEEE Hyderabad section. To express their gratitude, the vote of thanks was given by Mr. R. Karthik, staff coordinator, IEEE, and the event came to an end with the recitation of National Anthem.

**– Submitted by: Dr. K. Porkumaran, vice principal, Dr. NGP Institute of Technology**

Factory Visit and Official Meet – Siemens Limited Navi Mu held by Dr. N.G.P. IT in Coimbatore, India.

Dr. N.G.P. Institute of Technology (Dr. NGPIT) IEEE and WIE Student Branches organized a 3-day Factory Visit and Managers Meet during June 15-17, 2011. This consisted of a group of 14 students along with Student Branch counselor Dr. K. Porkumaran and IEEE coordinator Professor S. Prabakar. During the visit, the group held a factory visit and met the senior managers at Siemens, Kalwa Works, Navi Mumbai. During the three day session, students also made factory rounds and had short training sessions.



A warm welcome was given by Nilesh Sawant, chief manager, Training, for the students and professors of Dr. N.G.P. Institute of Technology. Nilesh Sawant gave a motivating talk to the students and explained the activities of Siemens Ltd. (Kalwa Works). Students and coordinators visited four different factories including Switch Gear, Motors, Transformer, and Switch Board. This was an amazing opportunity for the participants to be with Siemens officials during the training session. They were impressed and enjoyed being on the company's premises.



The motive of the visit was fulfilled by visualizing the real time functionality of a manufacturing industry. This offered very good exposure and provided awareness to the students of what it is like to be in an industrial environment as well as how far they have to mold themselves to fit with this kind of environment. The feedback of the students triggered the interest of others to visit industries like Siemens during the forthcoming years. Many students expressed their interest as a humble request to have the visit occur within their four-year course duration. -- **Submitted by: Dr. K. Porkumaran, vice principal, Dr. NGP Institute of Technology**

## WIE RESOURCES.

### Useful Links

Scholarships, Internships, Grants & Awards For Girls

Informative Publications History

Women in Engineering Statistics

Women in Science/Engineering Societies & Groups

Mentoring & Educational Resources

National Engineers Week/EWeek Activities

### More Interesting Links

[Electronics & Electrical Engineering Laboratory \(NIST\)](#)  
[Science and Technology Resources](#)

[Engineer Your Life](#)

[Women and Minorities in Science and Engineering](#)

### IEEE Quick Facts.

#### The IEEE has:

- more than 375,000 members including nearly 80,000 student members in more than 160 countries.
- 324 sections in ten geographic regions worldwide.
- 1,784 chapters that unite local members with similar technical interests.
- 1,616 student branches and 452 student branch chapters at colleges and universities in 80 countries.
- 38 societies and 7 technical councils representing the wide range of technical interests.
- 390 affinity groups consisting of Consultants' Network, Graduates of the Last Decade (GOLD), Women in Engineering (WIE), and Life Members (LM).

## IEEE GEOGRAPHICAL EVENTS AND ACTIVITIES

### MGA - Region Meetings Calendar

[http://www.ieee.org/web/volunteers/mga/home/meetings\\_calendar.html](http://www.ieee.org/web/volunteers/mga/home/meetings_calendar.html)

**Please Note:** The WIE DVD Library will be available in January 2011. For more details and available titles, please contact the WIE at [women@ieee.org](mailto:women@ieee.org)

**IEEE WIE Committee.** The IEEE Women in Engineering Committee (WIEC) consists of 10 voting members appointed by the Board of Directors. The WIEC is responsible for facilitating the development of programs and activities that promote the entry into and the retention of women in engineering programs, enhance the career advancement of women in the profession, and promote IEEE membership and retention of IEEE women members.

#### **WIE Committee Members - 2011**

Ramalatha Marimuthu, 2011 WIEC Chair  
Irena Atov, WIEC Past Chair  
Holly Cyrus  
Shana Fliginger  
Susan Kathy Land  
Karen Panetta, EAB  
Sarah Rajala  
Susan Murphy (GOLD)  
Wenli Huang (MGAB)  
Marina Ruggieri (TAB)  
Manuella D'Oliviera Pio (Student Member – 1 JUL 10 - 30 JUN 11)  
Natalia Dultra Raposo (Student Member – 1 JUL 11 - 30 JUN 12)

#### **WIE Staff**

Keyana Tennant, Program Manager – WIE  
Paola Bringas, Administrative Assistant – WIE  
Yvonne Pelham, Manager – Educational Outreach

#### **WIE Project Champions – 2011**

Dr. Karen Panetta, Editor, WIE Magazine  
Keyana Tennant, Associate Editor – WIE Magazine, WIE Newsletter  
Paulette January, Editor – WIE Newsletter  
Holly Cyrus, Awards

#### **2011 WIEC Liaisons**

Karen Panetta, EAB  
TBD (IEEE-USA)  
Wenli Huang, MGAB  
Ravi M. Todi (PSPB)  
Holly Cyrus (WIE to IEEE Awards)

Karen Bartleson (Standards Association)  
Marina Ruggieri (TAB)

#### **2011 WIE Regional Coordinators**

Darlene Rivera (Region 1)  
Kathleen McDevitt (Region 2)  
Parveen Wahid (Region 3)  
Kristi Brooks (Region 4)  
Ina Marie Vera Angeles (Region 5)  
Nirupama Prakash Kumar (Region 6)  
Behnaz Ghoraani (Region 7)  
TBD (Region 8)  
TBA (Region 9)  
Takako Hashimoto (Region 10)

#### **2011 Society Coordinators**

AEROSPACE & ELECTRONICS SYSTEM SOCIETY,  
Marina Ruggieri  
ANTENNAS AND PROPAGATION SOCIETY, Parveen Wahid  
BIOMETRICS COUNCIL, Elham Tabassi  
BROADCAST TECHNOLOGY SOCIETY, Christine Di Lapi  
CIRCUITS AND SYSTEMS SOCIETY, Pamela Abshire  
COMMUNICATIONS SOCIETY, Heather Yu  
COMPONENTS PACKAGING, AND MANUFACTURING TECHNOLOGY SOCIETY (CPMT), Kitty Pearsall  
COMPUTATIONAL INTELLIGENCE SOCIETY, Fahmida Chowdhury  
COMPUTER SOCIETY, Pamela J. Jones  
CONTROL SYSTEMS SOCIETY, Bozena Pasik-Duncan  
EDUCATION SOCIETY, Lynne Slivovsky  
ELECTRON DEVICES SOCIETY, Usha Varshney  
ENGINEERING IN MEDICAL AND BIOLOGY SOCIETY, Carolyn McGregor  
GEOSCIENCE SOCIETY, Karen St. Germain  
INDUSTRIAL ELECTRONICS SOCIETY, Elizabeth Chang  
INDUSTRY APPLICATIONS SOCIETY, Janet Flores  
INFORMATION THEORY SOCIETY, Christina Fragouli  
INSTRUMENTATION AND MEASUREMENT SOCIETY, Ferdinanda Ponci

INTELLIGENT TRANSPORTATION SYSTEMS, TBA  
 MAGNETICS SOCIETY, Katayun Barmak  
 MICROWAVE THEORY AND TECHNIQUES SOCIETY,  
 Charlotte Blair  
 NUCLEAR AND PLASMA SCIENCES SOCIETY (NPS),  
 Allan Johnston  
 OCEANIC ENGINEERING SOCIETY (OE) , Pamela Hurst  
 PHOTONICS SOCIETY, Hatice Altug  
 POWER ELECTRONICS SOCIETY, Ferdinanda Ponci  
 POWER & ENGINEERING SOCIETY, Maryam Al Thani  
 PRODUCT SAFETY ENGINEERING SOCIETY, Daniece  
 Carpenter  
 RELIABILITY SOCIETY, Marsha Abramo  
 ROBOTICS AND AUTOMATION SOCIETY, Mihoko Otake  
 SENSORS COUNCIL, Mona E. Zaghloul  
 SIGNAL PROCESSING SOCIETY, Eve Riskin  
 SOCIAL IMPLICATIONS of TECHNOLOGY (SSIT), Laura  
 Jacob  
 SYSTEMS, MAN AND CYBERNETICS SOCIETY  
 (SMCS), Maria Pia Fanti  
 ULTRASONICS, FERROELECTRICS, AND FREQUENCY  
 CONTROL SOCIETY (UFFC), Nazanin Bassiri-Gharb  
 VEHICULAR TECHNOLOGY SOCIETY, Carmella Cozzo

### DID YOU KNOW? ... WIE Affinity Groups.

There are two types of WIE Affinity Groups: IEEE Section Affinity Groups and Student Branch Affinity Groups. Find one in your Area below. If there is not a WIE affinity group in your local area [consider forming one](#). Affinity groups provide the opportunity for members to network at a local level. Activities may include guest speakers, workshops and seminars. All members are encouraged to join and participate in their local group activities to promote growth within the WIE. Currently, there are over 150 WIE Affinity Groups worldwide.

Region 1 – Northeastern USA
Region 2 – Eastern USA
Region 3 – Southeastern USA
Region 4 - Central USA
Region 5 – Southwestern USA
Region 6 – Western USA
Region 7 – Canada
Region 8 – Europe, Middle Eastern & Africa
Region 9 – Latin America
Region 10 – Asia & Pacific

**What Every Engineer Needs to Know About Leadership and Management.** Landing the perfect engineering job often means being able to showcase key leadership and management skills, according to an article from IEEE-USA Today's Engineer. Most engineering positions will require engineers to negotiate, plan, influence, direct, estimate and resolve conflicts – all important management skills. The technical skills that an engineer's job requires are often only a small percentage of the competencies that are needed to be successful. As engineers advance, leadership and management competencies become more important, regardless of whether or not they are on the "management" track. [Learn more](#) *Excerpt from What's New @IEEE*

### LET'S ANSWER A RIDDLE.

**What did the executioner do at Christmas? Answer: He went sleighing (slaying).** (Compliments of Riddles & More)

### CAN YOU FIGURE THIS RIDDLE?

**Why can't you play games with pigs?**  
 (Tune in next month for credits and the answer.)

### MESSAGE TO THE IEEE WIE COMMUNITY ABOUT THE UPCOMING FACEBOOK CAMPAIGN:

Dear WIE community members and future members of the IEEE WIE Facebook pages and groups, this fall we plan to involve a broader global online community within Facebook to engage in discussions around the topics relevant to IEEE Women in Engineering. There has been a renewed focus on engineering education reform this year that is motivating academicians and those people responsible for hiring engineers. We want to make sure that young professionals and students are not left out and we plan to continue to reach out to them via the growing Facebook community interested in the profession and the challenges that women face.

We would like to invite you to the main IEEE WIE Facebook page: [www.facebook.com/ieeewomeninengineering](http://www.facebook.com/ieeewomeninengineering) the week of September 16 and throughout October 2011 to participate in the discussions. We plan on many exciting updates, polls and conversations driven by our experts that we hope you will be able to participate in and share with you immediate communities. See you there and thank you for your continued support!



To show the response for increased time response

INCREASES 0.2573

electric car moving on

work

The

of the preabole

HTP://www

Br

and slo

timel

Science

time constant =  $\frac{1}{\lambda}$

$\lambda = 3.14$

3.2

They're "Beauty and the Geek" all in one package! Meet the NERD GIRLS - an impressive team of female engineering students, just one year away from landing top jobs with \$70,000 salaries. They turn heads when they enter a room - they're stylish, self-possessed, ambitious and confident. Whether building a solar car or harnessing wind power on a remote island, these girls fully intend to change the planet with their own ingenuity and hard work. NERD GIRLS is coming to reality television and will be a multi-platform broadcast in the United States and abroad. Visit [Nerd Girls](#).

Welcome to the Gallery of Women Engineers!



These engineers work every day to solve problems and make the world a better, cleaner, safer place. These women are also actively involved in their communities, raising families, and enjoying all kinds of sports and hobbies.

Hey ENGINEER GIRL,   
Check Out These PROFILES!



Maeling Tapp  
Materials Engineer



Monique Frize  
Bioengineering/Biomedical  
Engineer

View more information on [Engineer Girl](#).



**Turn imagination into reality with a future in engineering! You'll have the power to make a difference!**



By becoming an engineer, you can help solve problems that are important to society. You could be controlling and preventing pollution, developing new medicines, creating

advanced technologies, even exploring new worlds. **You'll have money and job security! You'll be working with other talented people! You'll have lots of options! You'll get to do cool stuff!**

Engineers will be involved in making all the wonders of the future a reality. Interested? Visit the website below for Engineer Girl at: <http://www.engineergirl.org/>



## IEEE WIE ASSISTANCE.



**WIE Magazine Receives APEX Award 2010.** Six nominations were submitted on behalf of WIE for the 2010 APEX Awards (Awards for Publication Excellence), with more than 3,700 entries total. 100 Grand Awards were presented to honor outstanding work in 11 major categories. WIE has won one of the Grand Awards for the NERD Girls Video.

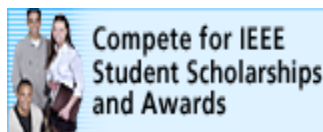


The IEEE WIE-NUCES Chronicles of Lahore, Pakistan newsletter is available. Enjoy viewing the newsletter at [wie.ieeenuces.org](http://wie.ieeenuces.org).

## The Engineer's Pledge

Engineer Your Life *"Dream big. Love what you do."*  
Do you want to help give engineering a better image? Do you want to let people know how exciting and rewarding an engineering career can be? Then change the way you talk about engineering! [Take the Engineer's Pledge.](#) For more information on the Engineer's Pledge, please visit Facebook at: <http://www.facebook.com/pages/The-Engineers-Pledge/139865679358530?ref=ts#/pages/The-Engineers-Pledge/139865679358530?v=info&ref=ts>.

## Awards, Scholarships and Competitions



IEEE offers a variety of awards, competitions, contests, scholarships and fellowships. Many are offered to IEEE student members, such as the Regional Student Paper Contests and the Student Enterprise Award. You will find contact information for each award listed when you click on the link. Two Student

Branch awards to get you more involved include the [Darrel Chong](#) Student Activity

Award and the [IEEE Xtreme](#) 24

hour Programming Challenge.



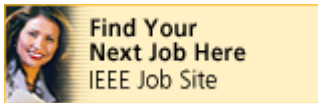
Welcome to the National Engineers Week Foundation Online.

More E-Week News at [www.eweek.org](http://www.eweek.org)

**TryEngineering.org**



The IEEE and IBM have created a new Web site that combines information on engineering careers with interactive activities. Intended for pre-university students, parents, teachers, school counselors, and the general public, TryEngineering.org lets visitors explore how to prepare for an engineering career, ask experts engineering-related questions, play interactive games, and more. Visit [www.tryengineering.org](http://www.tryengineering.org) today!



### Career and Employment Resources

The IEEE offers a range of opportunities for members and others interested in advancing their careers or finding employment. If you don't find what you're looking for here at <http://careers.ieee.org>, be sure to visit the [IEEE Education](#) section or [IEEE-USA](#) for additional resources to support your professional journey. **IS YOUR SALARY ON TARGET?** Check out the [IEEE-USA Salary Service](#) ... Click on this link to take the [IEEE-USA Salary Survey](#).



### [View Premiere Issue of IEEE Women in Engineering Magazine](#)



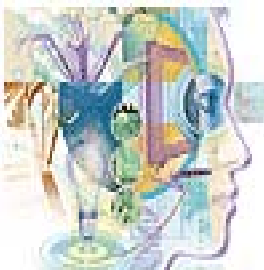
[Call for Articles](#)

IEEE Women in Engineering Magazine includes topics that show the cross-cutting and interdisciplinary nature of engineering, containing articles that integrate engineering with current issues facing society such as Careers, Health Care, Medicine, Law, Governance, as well as international women's issues. For **advertising**, visit <http://www.ieee.org/ieee-media> and scroll down to the WIE Cover.



### IEEE memberNet - The IEEE Member Directory Online

IEEE memberNet is an online search and networking tool that allows members to connect with technical and engineering experts worldwide. This tool can be utilized by members seeking peers who share a common technical interest, membership, or affinity. Visit the website at <http://www.ieee.org/web/membership/memberNet.html>



### 2011 Global Marathon

[For, By and About Women in Engineering and Technology](#)

For more information on the Global Marathon results, visit <http://www.eweek.org/EngineersWeek/GlobalMarathon.aspx>.



*IEEE Expert Now offers over 70 online continuing education courses covering a variety of topics on cutting edge trends and emerging technologies in a wide array of disciplines. [Learn more](#)*

## Welcome to EE Recruitment!



Technical  
staffing  
solutions



The power  
of  
people

Visit **EE Recruitment** at [www.eerecruitment.co.za](http://www.eerecruitment.co.za) which is a website for technical jobs and staff recruitment services in the electrical, electronics, lighting, automation, instrumentation, computer, information, communications, GIS and surveying sectors.

**IEEE eLearning Library (formerly Expert Now).** To view all available tutorials in the IEEE eLearning Library, please visit <http://ieee-elearning.org/> and login with your IEEE Web Account.



**WIE is now on Facebook! The WIE is on Facebook.**

Please join us at our recently launched WIE Facebook Page at

<http://www.facebook.com/home.php?#!/pages/IEEE-Women-in-Engineering/150443418299658?ref=ts>



IEEE Global History Network provides an opportunity for IEEE members to tell in their own words stories of their involvement in technology at <http://www.ieeeahn.org/wiki/index.php/Special:FirstHandHistories>.





For Release 25 April 2011

Contact: Charles Hickman, Manager, University Programs

IEEE Educational Activities +1 732 981-3419 [c.w.hickman@ieee.org](mailto:c.w.hickman@ieee.org)

## NEW COMPETITION INVITES STUDENT TEAMS TO BUILD A SMARTER PLANET

**Piscataway, NJ**--A new competition co-sponsored by IBM and IEEE provides teams of university students with an opportunity to bring some of the world's most compelling social and commercial challenges into the classroom.

The **IBM/IEEE Smarter Planet Challenge: Student Projects Changing the World** will debut in IEEE sections in Boston and the United Kingdom-Republic of Ireland during 2011, before being expanded worldwide next year. In the first-year pilot phase, up to three awards will be provided to each section to student teams that propose classroom projects derived from a menu of topics identified by the worldwide IBM Smarter Planet project that confront technology professionals, business leaders and policy-makers.

"Solutions for most Smarter Planet issues require technological expertise, an understanding of business and legal principles, and an appreciation for the social implications of innovation," says Wendy Murphy, Executive Program Manager, IBM Global University Programs. "By co-sponsoring this competition, we want to encourage students to work together in the kind of multi-disciplinary teams that have become a fixture in innovative organizations," she added.

Under terms of the 2011 competition, teams of three to five members must include at least one student from electrical engineering, computer science or computer engineering, and at least one student from a different engineering field (such as biomedical, chemical, civil or mechanical) or non-engineering discipline (such as business, health sciences, law or the social sciences). Teams can propose projects of up to one standard course unit (such as a semester or quarter) in length, and the projects can be intended for use in classrooms ranging from primary and secondary education to the university level. Focus of the project proposals can be on any of ten industries (such as communications, electrical/automotive, energy/utilities and health care) included in the IBM Smarter Planet initiative (see <http://www.ibm.com/smarterplanet/>).

"We are pleased to introduce this new project through the IEEE sections in Boston and the United Kingdom-Republic of Ireland," declared Moshe Kam, 2011 President of IEEE, and Department Head and Robert Quinn Professor of Electrical and Computer Engineering at Drexel University. "Both groups have large and active student representation, and both serve locations that are a frequent source of scientific breakthrough and technological transfer," he said.

Cash prizes of \$3,000, \$2,000 and \$1,000 for the best student team proposals will be awarded by IBM and IEEE. The deadline for submission of project proposals is 15 November 2011. A panel of judges is expected to announce award recipients by mid-December. Full details about application procedures and selection criteria are available at [smarter planet challenge](http://www.ibm.com/smarterplanet/challenge).

### About IEEE

IEEE, the world's largest technical professional association, is dedicated to advancing technology for the benefit of humanity. Through its highly cited publications, conferences, technology standards, and activities, IEEE serves as the trusted "voice" for engineering and other technical professions around the globe. With a membership of more than 400,000 engineers and technical professionals across 160 countries, IEEE publishes 30 percent of the world's literature in the electrical and electronics engineering and computer science fields, and has developed nearly 900 active industry standards. The organization annually sponsors more than 1,000 conferences worldwide. Learn more at <http://www.ieee.org>.

### IBM

For information about academic programs with IBM visit: <http://www.ibm.com/developerworks/university/>

## THE IBM/IEEE SMARTER PLANET CHALLENGE: STUDENT PROJECTS CHANGING THE WORLD

IBM and IEEE are in search of creative team-based student projects that can help students at any level learn about applying engineering, science and other disciplines to solve real world problems. Rapid advances in technology and science provide members of engineering professions with fresh ways to apply technical expertise to improve today's world. Use your expertise to develop unique learning experiences for future students.

### ELIGIBILITY:

Student teams must have three to five members in any year of university study. At least one must be a member of IEEE. Student teams must have at least one individual majoring in an area other than electrical engineering, computer engineering, or computer science. Participation of students outside of engineering (e.g., business, liberal arts or social science) is strongly encouraged.

**PROJECT TOPICS:** Selection preference will be given to projects that relate to needs in broad areas identified by the IBM Smarter Planet initiative (<http://www.ibm.com/smarterplanet/>), including:

Banking	Healthcare
Communication	Insurance
Electronics, automotive, aerospace	Oil and gas
Energy and utilities	Retail
Government	Transportation

Teams should be able to execute projects completely within one standard course time frame (such as a semester or a quarter). The projects need to require skills or expertise from more than one field of study.

**APPLICATION PROCESS:** To participate in the 2011 IBM/IEEE Smarter Planet Challenge, student teams should submit a document that describes:

- Project title
- Project description
- Project audience - who is the intended audience? University first-year students, second-year students, etc; primary school students or secondary school students.
- Project details:
  - The specific activities that students will perform
  - Required materials and resources
  - Estimated number of hours needed to implement the project (by participating students)
  - The major skills students need in order to complete the project
- Lead proposer's: name, address, phone number, e-mail address, field of major, year of study and institution
- Team members: names, e-mail addresses, fields of major, year of study and institution
- Optionally: teams may include an endorsement from faculty member(s).

**SELECTION PROCESS:** Applications for the 2011 awards will be judged by a selection panel comprised of experts from the academic, professional and business communities. Judging criteria will include:

- relevance of the project to an actual real world problem;
- clarity and significance of the engineering , computing, and other principles and concepts featured in the project;
- degree to which the project allows for alternate methods of solution;
- degree to which the project can be replicated at other institutions.

**PRIZES:** In 2011, up to three student teams in each of the two pilot IEEE sections—Boston, and United Kingdom and Republic of Ireland—will receive Smarter Planet Challenge awards.

**First Place:** \$3,000 for each team

**Second Place:** \$2,000 for each team

**Third Place:** \$1,000 for each team

<b>KEY DATES:</b>	<b>Application deadline:</b>	November 15, 2011
	<b>Judging Completed:</b>	December 10, 2011
	<b>Awards Announced:</b>	December 15, 2011

**TO SUBMIT A COMPLETED APPLICATION:** Create a single document in Word or PDF format and submit to:  
[smartplantchallenge@ieee.org](mailto:smartplantchallenge@ieee.org)

